



MIRON

MIPv6 Route Optimization for NEMO

Carlos J. Bernardos <cjbc@it.uc3m.es>

Marcelo Bagnulo <marcelo@it.uc3m.es>

María Calderón <maria@it.uc3m.es>

University Carlos III of Madrid - Spain

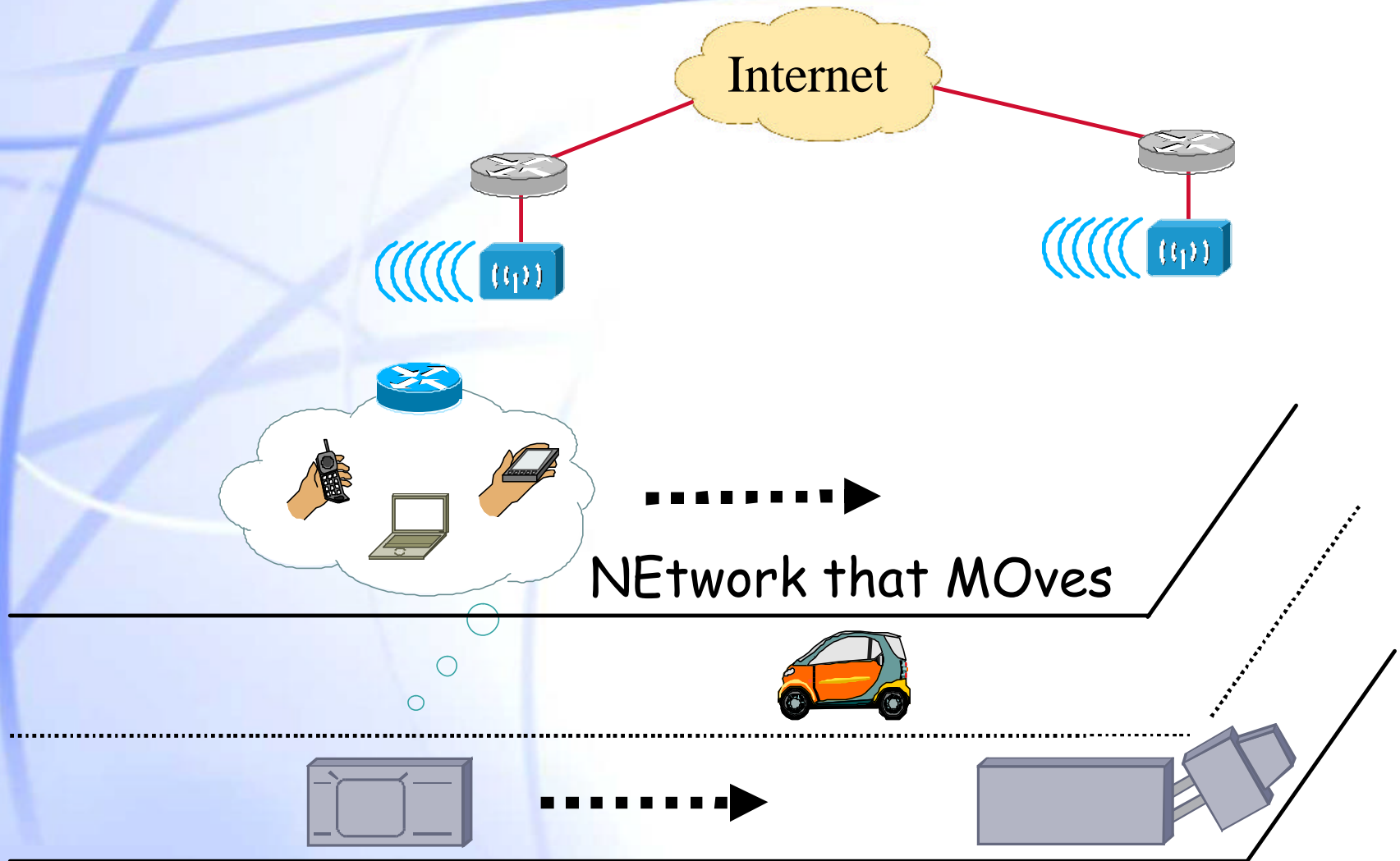
2004-08-11

Outline

- ? **Network Mobility**
 - ? **Network Mobility support**
- ? **NEMO Basic Protocol**
- ? **MIRON**
 - ? **Single Mobile Network**
 - ? **Nested Mobile Networks**
 - ? **Performance evaluation**
- ? **Conclusions and future work**
- ? **References**



Network Mobility

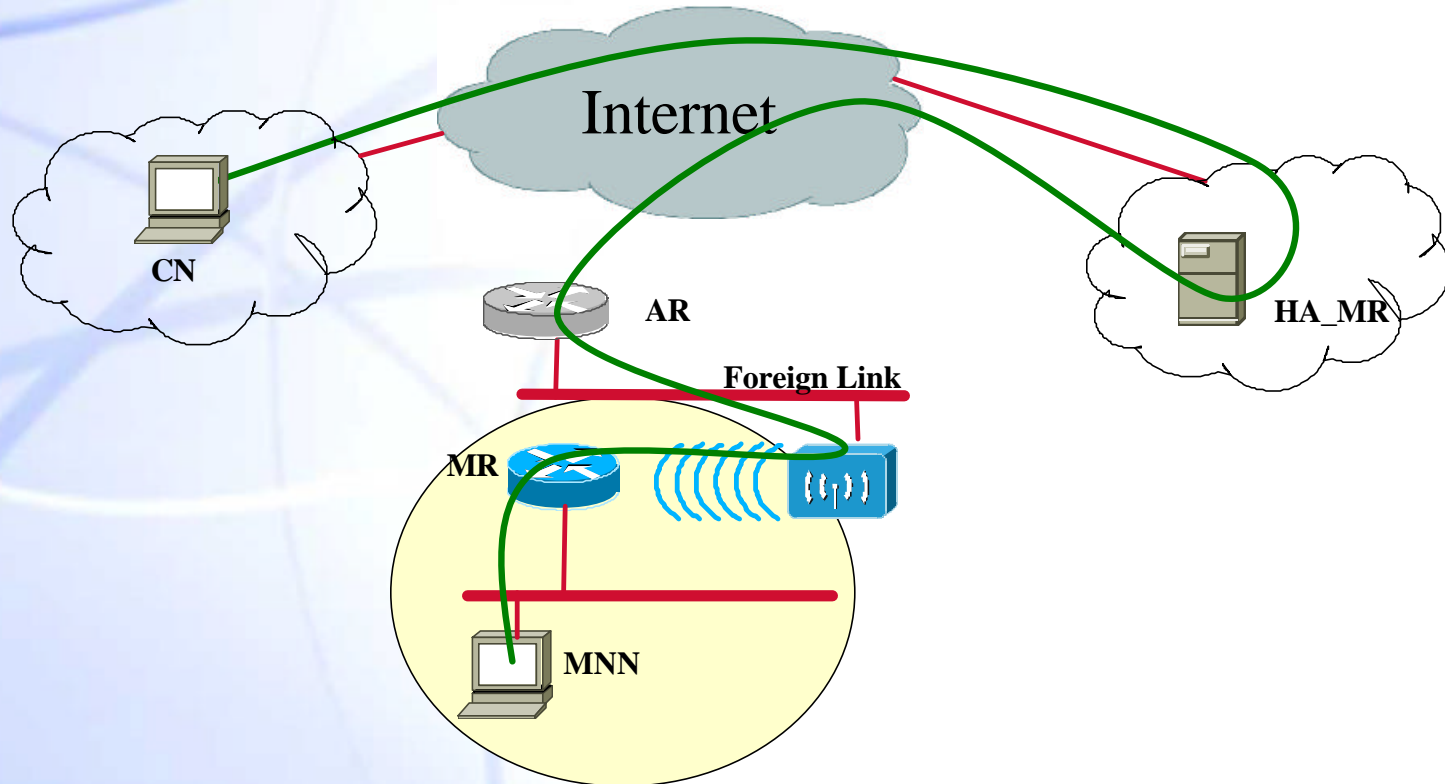


Network Mobility support

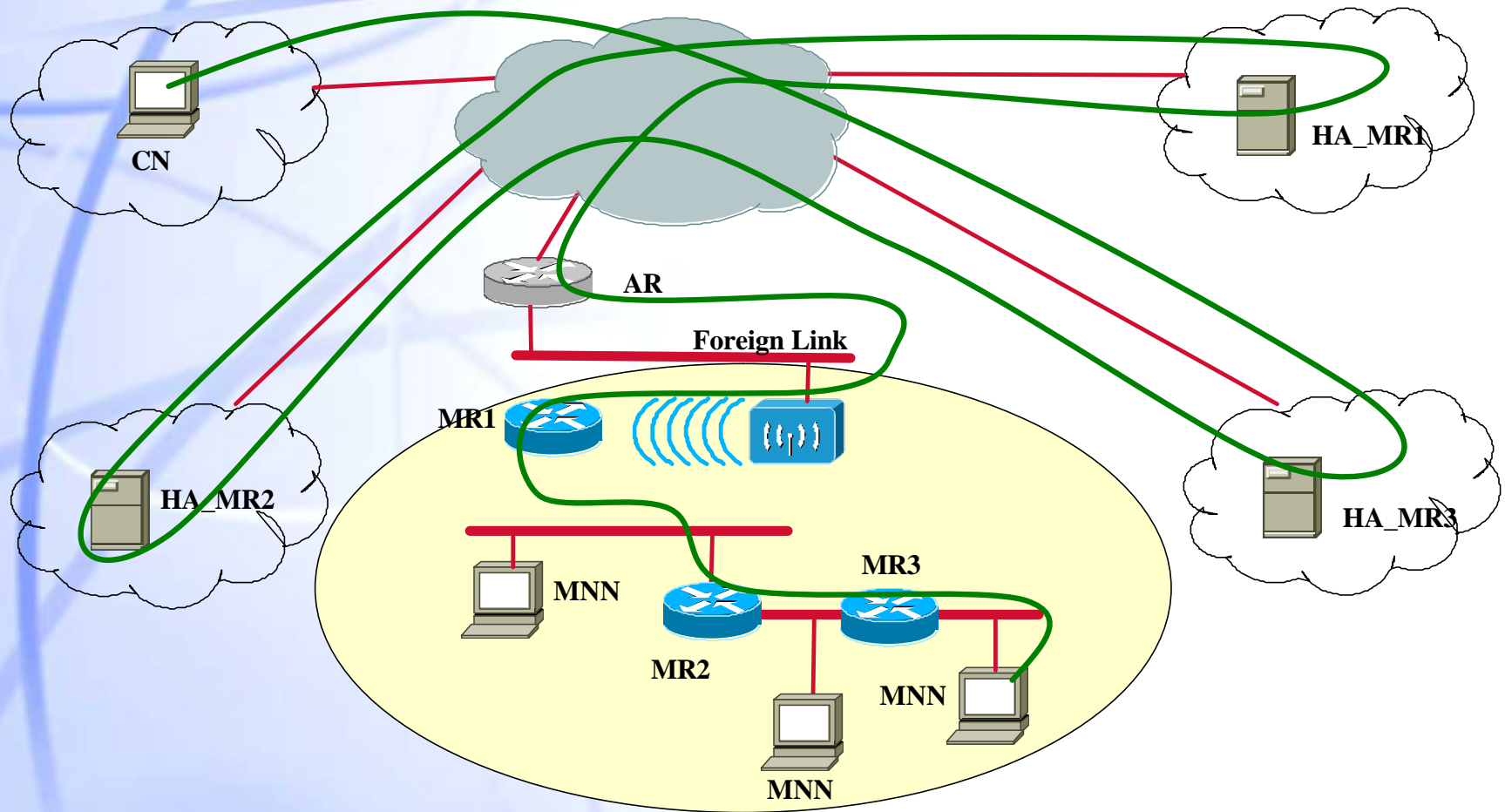
- ? **Demand for Internet access in mobile platforms (e.g. trains, buses) is increasing**
- ? **There are some proposals for supporting Network Mobility**
- ? **One of them is done within the IETF NEMO WG**
 - ? **NEMO Basic Support Protocol**
 - ? **Mobility managed at IP level**
 - ? **Based on Mobile IPv6 protocol (i.e. terminal mobility)**
 - ? **Bidirectional tunnel between MR and HA**



NEMO Basic Support Protocol (I)



NEMO Basic Support Protocol (II)



Route Optimization issue

? **NEMO Basic Support Protocol has one of the problems of Mobile IPv6:**

? **Triangle Routing**

? **Solved in Mobile IPv6 with the Route Optimization support**

? **MIRON adapts MIPv6 RO to optimize CN-LFN flows**

? **Besides, NEMOs can be NESTED**

? **Pinball Routing**

? **Some solutions proposed so far**

? No one seems to solve the problem properly

? **MIRON proposes an address delegation mechanism with built-in routing that avoids the tunnel overhead**



MIRON. Single Mobile Network (I)

? **Goals and requirements**

? **To provide Transparent Route Optimization between a LFN and a CN**

? **Avoiding triangle routing**

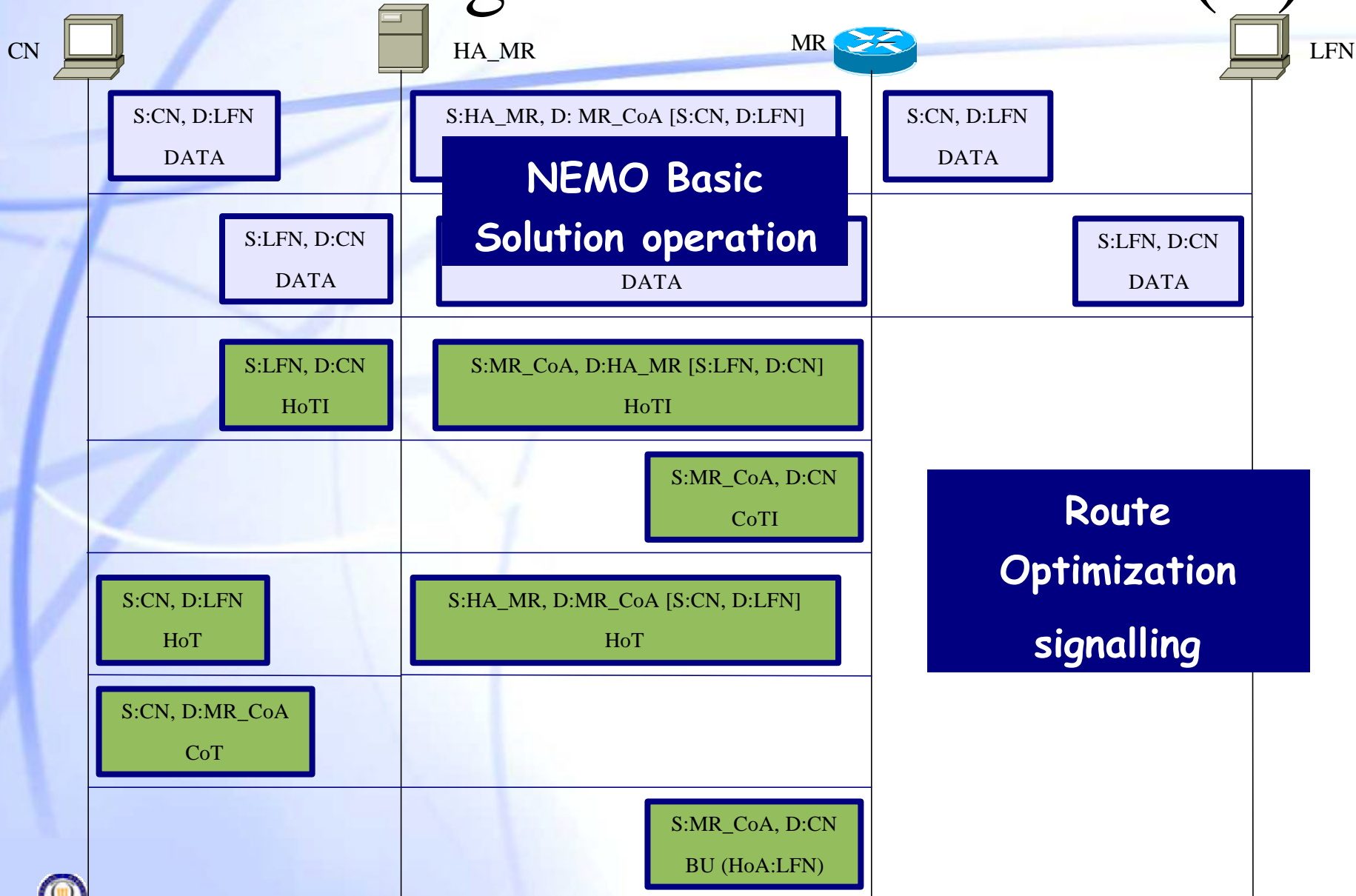
? **Preserving CN and LFN operation unchanged**

? **Basically consists in performing MIPv6 Route Optimization procedure between the MR (on behalf of the LFN) and the CN**

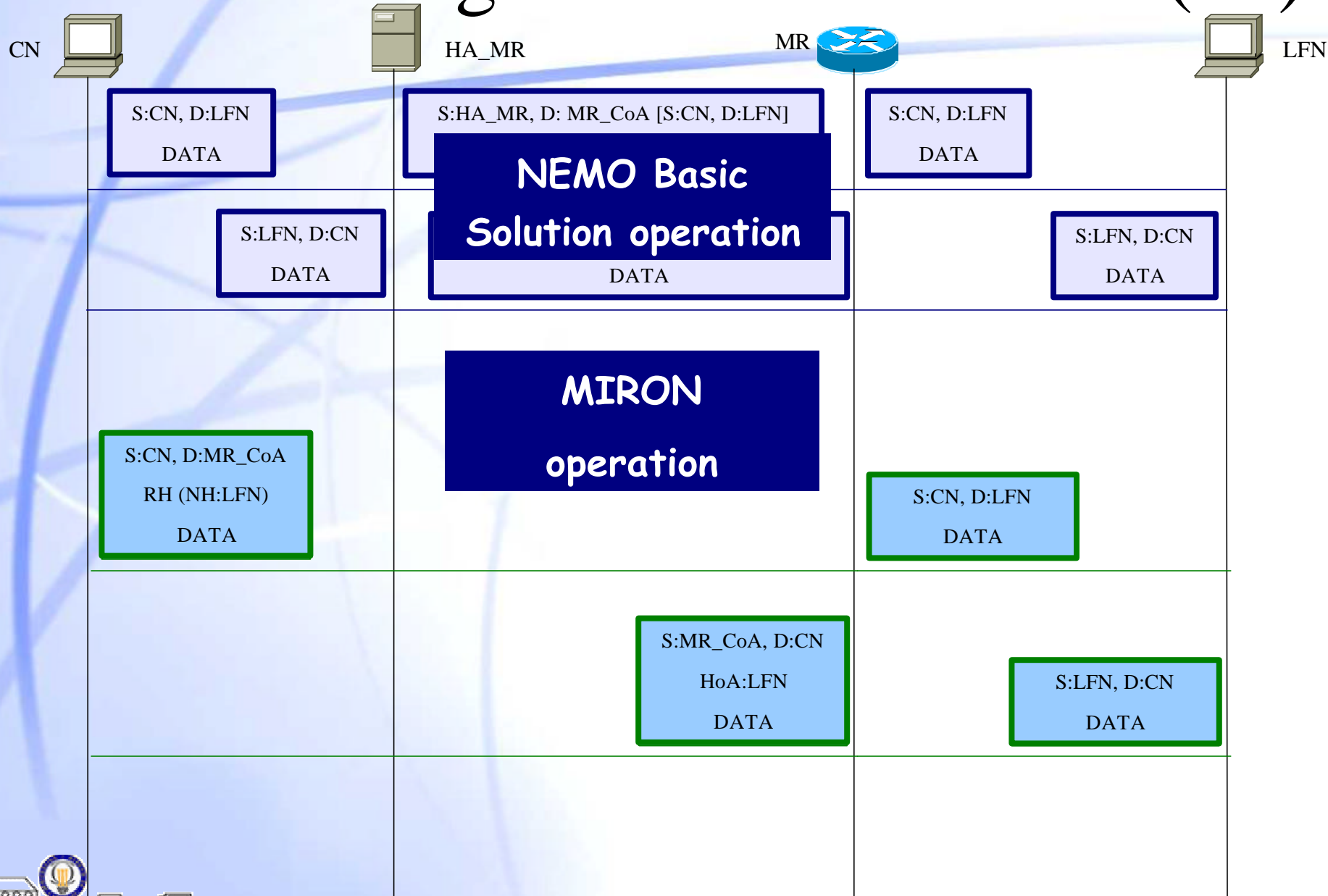
? **The solution profits from the installed base of CNs that support MIPv6 RO**



MIRON. Single Mobile Network (II)



MIRON. Single Mobile Network (III)



MIRON. Nested Mobile Networks (I)

? **Goals and requirements**

? **To provide Transparent Route Optimization for Nested Mobile Networks**

? **Avoiding pinball routing**

? **Preserving CNs and MNNs operation unchanged**

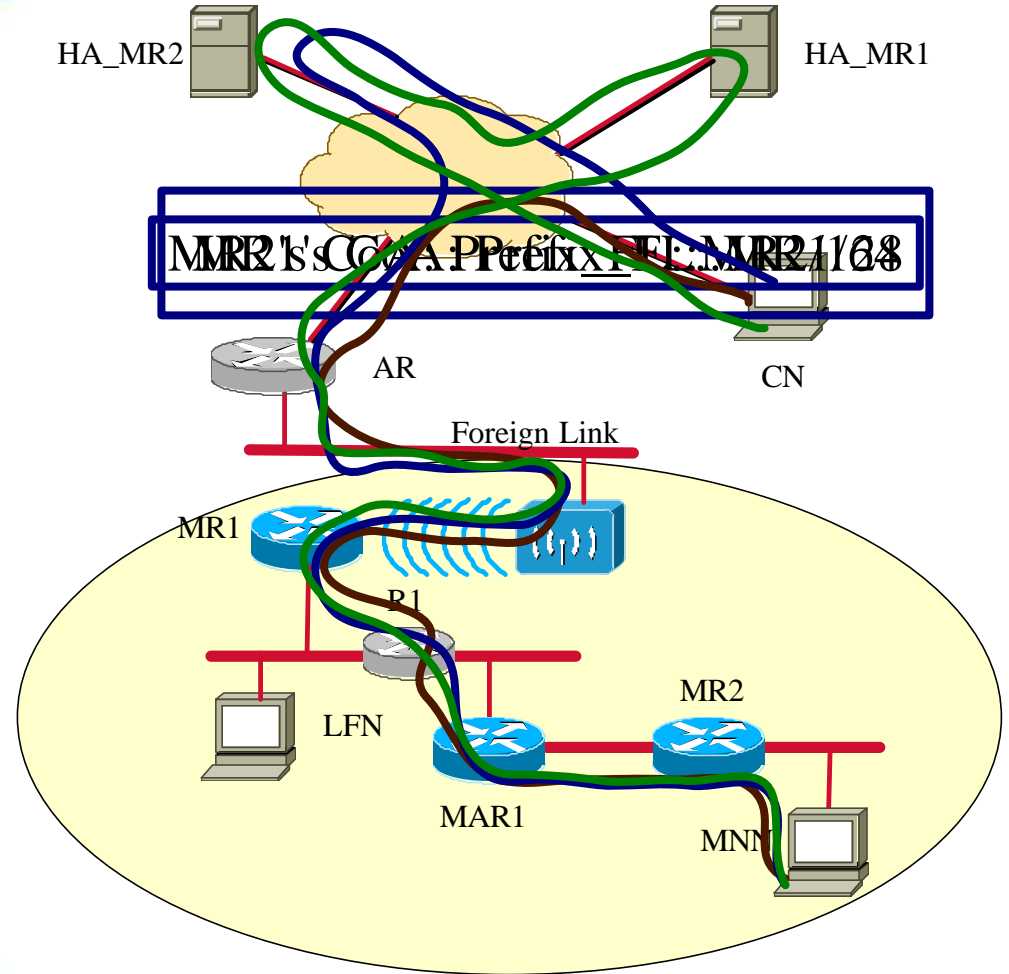
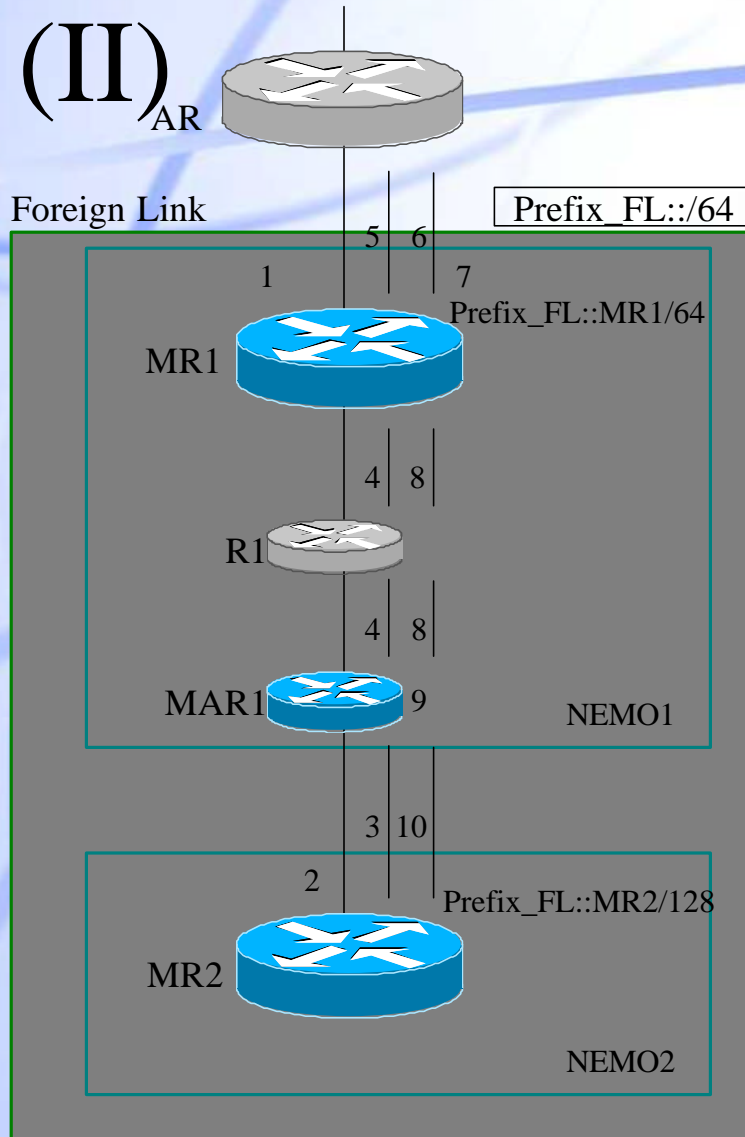
? **Basically consists in delegating topologically correct IPv6 addresses to every MR within a nested NEMO**

? **Routing of packets within the NEMO is also provided**

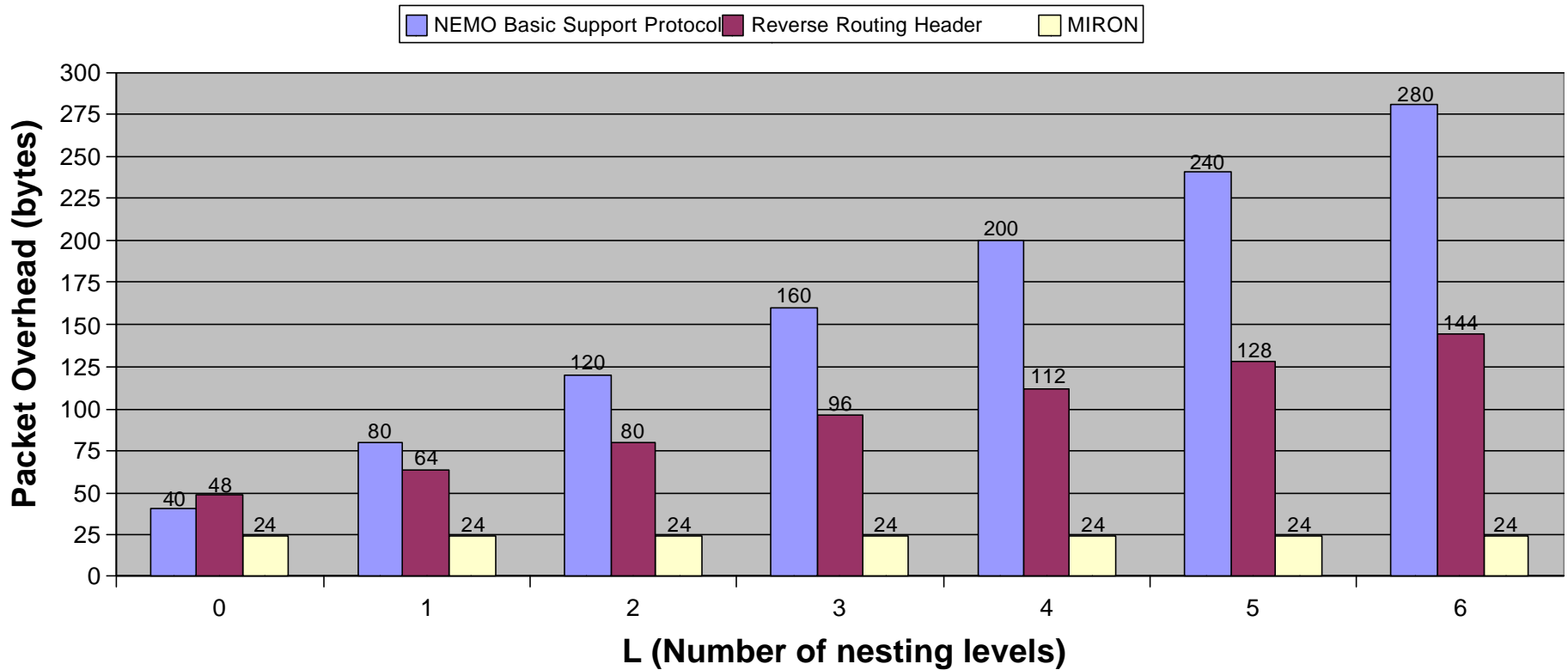


MIRON. Nested Mobile Networks

(II)



MIRON. Performance evaluation



MIRON. Conclusions and future work

? **MIRON provides Route Optimization for NEMO**

? **LFN-CN RO**

- ? **Route Optimization between LFN and CN (MR performs MIPv6 RO on behalf of the LFN)**
- ? **Avoid triangle routing**
- ? **Requires flow identification and tracking**

? **Nesting RO**

- ? **Provides valid and reachable IPv6 addresses to every MR within the nested, to be used as CoAs**
- ? **Avoid pinball routing**
- ? **Can be used also separately to avoid tunnels introduced by nesting (or together with the previous)**
- ? **Use of prefix delegation should also be studied**



References

- ? ***Nemo Basic Support Protocol.*** Vijay Devarapalli et al. draft-ietf-nemo-basic-support-01 (work-in-progress)
- ? ***Network Mobility Support Terminology.*** T. Ernst et al. draft-ietf-nemo-terminology-01 (work-in-progress)
- ? ***Network Mobility Support Goals and Requirements.*** T. Ernst. draft-ietf-nemo-requirements-02 (work-in-progress)
- ? ***Mobility Support in IPv6.*** D. Johnson et al. draft-ietf-mobileip-ipv6-24 (work-in-progress)
- ? ***Taxonomy of Route Optimization models in the Nemo Context.*** P. Thubert et al. draft-thubert-nemo-ro-taxonomy-02 (work-in-progress)
- ? ***IPv6 Reverse Routing Header and its application to Mobile Networks.*** P. Thubert et al. draft-thubert-nemo-reverse-routing-header-04 (work-in-progress)
- ? **EU FP6 DAIDALOS Project.** <http://www.ist-daidalos.org>





MIRON

MIPv6 Route Optimization for NEMO

Carlos J. Bernardos <cjbc@it.uc3m.es>

Marcelo Bagnulo <marcelo@it.uc3m.es>

María Calderón <maria@it.uc3m.es>

University Carlos III of Madrid - Spain

2004-08-11